



# EVIDENCE INVESTIGATOR

An Evidence Series Analyser

---

**RANDOX**



# CONTENTS

---

## Radox

Dedicated To Improving Health Worldwide • p.04

### **01 Biochip Array Technology**

Introduction • p.05

Benefits • p.06

### **02 Evidence Investigator**

Adaptable, Efficient & Comprehensive • p.08

Key Benefits • p.12

### **03 Technical Information**

Evidence Investigator Package • p.14

Immunoassay Testing Process • p.15

Software • p.16

Specifications • p.18

### **04 Molecular**

Molecular Testing • p.20

Molecular Testing Process • p.21

### **05 Test Menu**

Immunoassay, Toxicology, Molecular, Food Diagnostics • p.22

### **06 Supporting You**

Customer Support Network • p.28

Why Buy Evidence Investigator? • p.30

## DEDICATED TO IMPROVING HEALTH WORLDWIDE

---

In 2002, Randox invented a world first; Biochip Array Technology, instantly changing the landscape of testing forever. Biochip Array Technology is a multi-analyte platform which provides an unrivalled increase in information per sample. Instead of a sample needing to be subdivided for each test result, or in some cases re-collected, Biochip Array Technology offers a complete profile with each sample. So now the user's requirements become the focus as Biochip Array Technology delivers the results profile needed for improved diagnosis.

With over £250 million invested into Biochip Array Technology research and development, Randox have launched a range of Biochip Array Technology immunoanalysers – The Evidence Series. This includes the Evidence, the Evidence Evolution, the Evidence Investigator and the Evidence MultiSTAT. Each analyser is developed with boundary pushing engineering, designed to make financial, labour and time savings for the end user.

## THE EVIDENCE SERIES

---



Evolution



Evidence



Investigator



MultiSTAT

## BIOCHIP ARRAY TECHNOLOGY

---



Biochip Array Technology is a precision multiplex testing platform allowing for the simultaneous quantitative or qualitative detection of a wide range of analytes from a single sample.

Biochip Array Technology offers unique immunoassay-based diagnostic testing for simultaneous multi-analyte biomarker detection. After the addition of a sample to the biochip, analytes present in the sample bind to the specific biochip bound ligands. The degree of binding is determined using a chemiluminescent light source and quantified using a Charge Coupled Device (CCD) camera and imaging system.

Each biochip can have up to 49 Discrete Test Regions (DTR). This means that up to 44 tests can be carried out simultaneously. The additional DTRs are reserved for internal quality control and visual reference, a unique Biochip Array Technology feature.



## APPLICATIONS

---

- Clinical Diagnostics
- Drug Development
- Molecular Diagnostics
- Toxicology
- Food Diagnostics; for the presence of veterinary drug residues and mycotoxins
- Academic Research
- Veterinary Testing

## MULTIPLEX TECHNOLOGY

---



### Precise Testing

- Biochip Array Technology has a proven high standard of precise test results
- Multiplex analysis minimises analytical variation between tests



### Optimum Efficiency

- Dedicated multi-analyte reagents and quality control material are manufactured by Randox providing reliable and controlled testing
- This ensures Biochip Array Technology is a truly effective end-to-end solution



### True Cost Reduction

- Multiplex testing reduces the amount of time and labour spent on individual tests as well as associated laboratory costs
- Through running tests simultaneously, multiplex testing represents greater value for money as fewer samples and consumables are able to deliver more in-depth analysis



### Superior Patient Profiling

- Testing for multiple markers simultaneously increases the amount of information rapidly available to the clinician, allowing for more informed diagnosis

## FLEXIBILITY

---



### Small Sample Volume

- A smaller sample volume required due to multiplexing
- Increased profiling saves precious sample if further reflex analysis is required



### Wide and Varied Test Menu

- Randox's vast Biochip Array Technology test menu allows users to detect routine and novel markers for advanced diagnostic and research analysis
- Randox has the world's most innovative test development program. With 400 assays in development, Biochip Array Technology ensures you are able to effortlessly add to your testing program



### Adaptability

- Multiple sample types can be used on one analyser including serum, plasma, cerebrospinal fluid, whole blood, urine, oral fluid and food diagnostics for veterinary drug residues
- Allows the user to easily extend testing as new tests can be added without additional equipment

## SUPERIOR REPORTING

---



### Retrospective Reporting

- Retrieve previously unreported results without additional testing, saving time and the need to collect more sample

## ADAPTABLE, EFFICIENT & COMPREHENSIVE

---

The Evidence Investigator is a compact, semi-automated benchtop analyser that offers efficient and comprehensive testing across a range of applications including clinical diagnostics, molecular, research, toxicology and food diagnostics.

Renowned for its versatility, robustness and effective reporting methods, the Evidence Investigator has been used in a wide range of laboratory settings for over 15 years. This highly advanced yet simple to use analyser has only one moving part, giving the user peace of mind. The Evidence Investigator contains a host of innovative on-board data analysis features ensuring manual processes are kept to a minimum.

Offering efficiency without compromising on accuracy, the Evidence Investigator is the perfect fit for medium throughput laboratories seeking maximum use of benchspace.

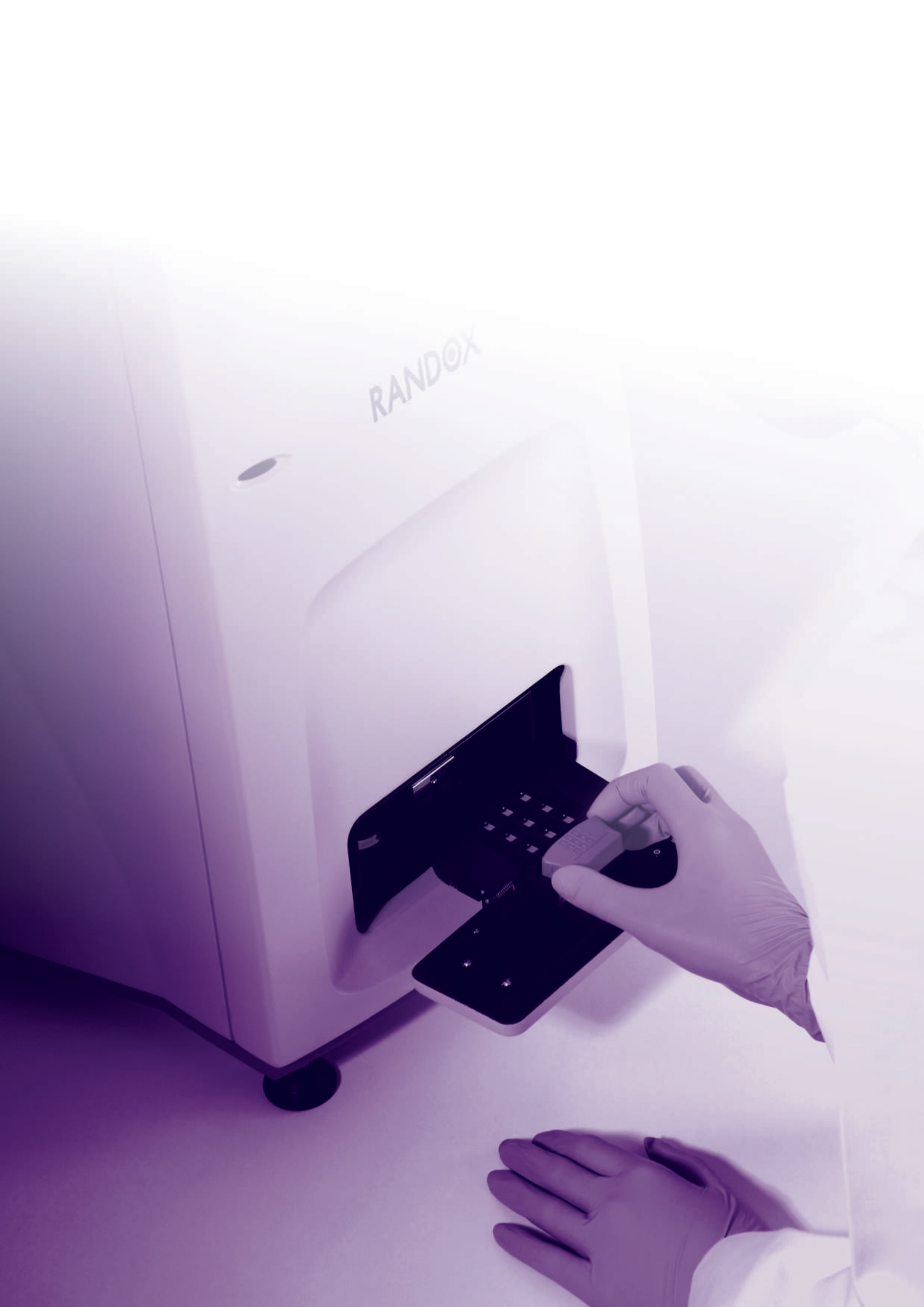


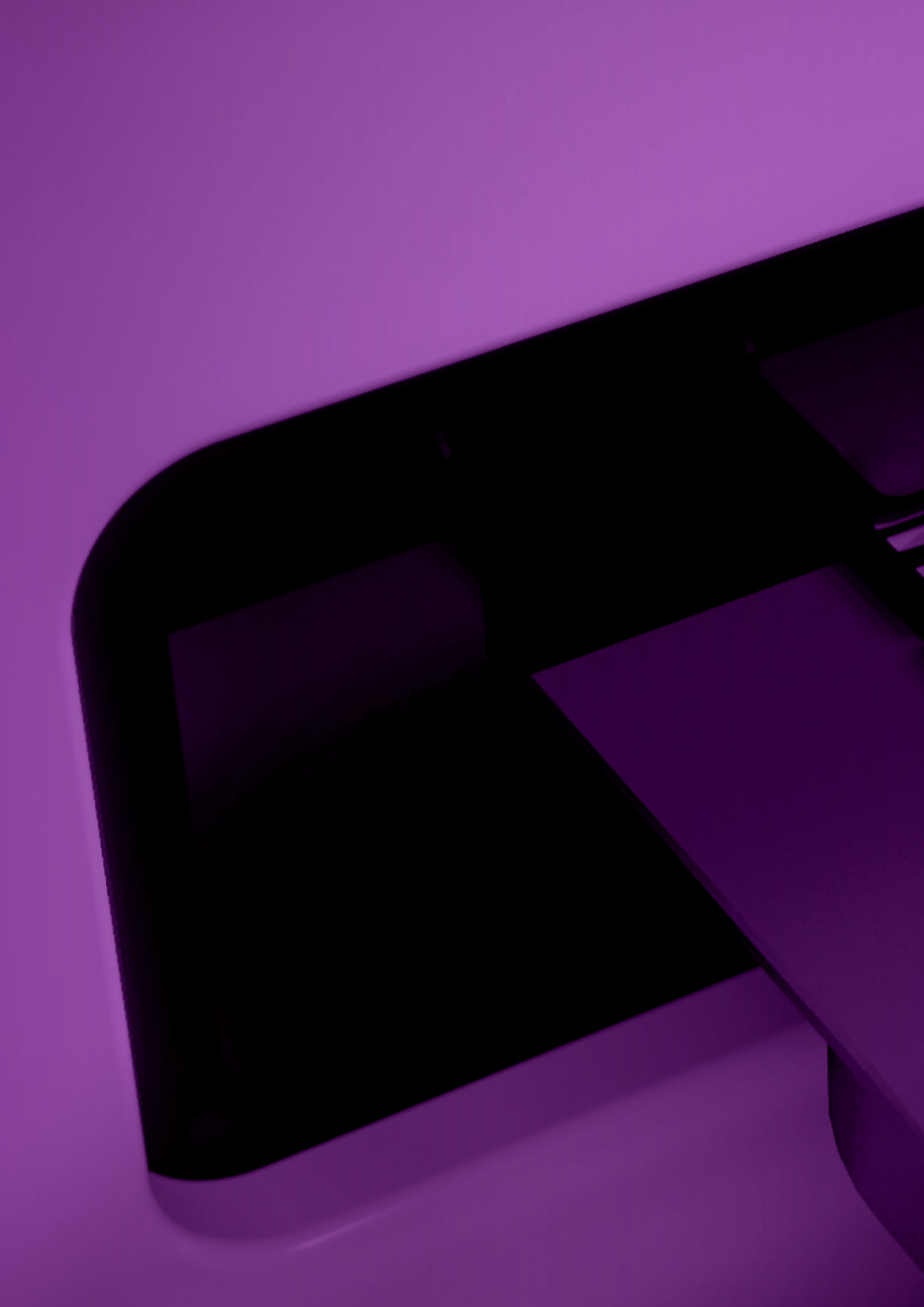
---

Dimensions	75 (H) x 48 (D) x 42 (W) cm
Weight	24 kg, 52.9 lbs
Throughput	Up to 2376 tests per hour



RANDOX





## KEY BENEFITS

---



## ACCURATE AND ROBUST

---



Results are generated using a Charge Coupled Device (CCD) camera, which quantifies chemiluminescent light. This light measures the degree of binding between the sample and specific biochip bound ligands.

The Evidence Investigator is extremely well equipped to provide reliable results, while simultaneously robust enough to withstand frequent, heavy use.



## UNIQUE CONSOLIDATION

---



The Evidence Investigator is the world's first platform allowing consolidation of immunoassay and molecular diagnostics. This is achieved through utilising protein and DNA based biochips. By giving the user the ability to consolidate tests, the Evidence Investigator improves laboratory efficiency and reduces costs.



## ADVANCED ANALYSIS AND REPORTING METHODS

---



The Evidence Investigator image processing software translates light signal generated from chemiluminescent reactions into analyte concentration. This removes the need for any manual processing of data.

The Evidence Investigator also has the ability to retrieve previously unreported tests so they can be tested retrospectively. This saves time, labour costs and reduces any reagents wastage. All data is then analysed on-board, removing issues related to human error and result manipulation.

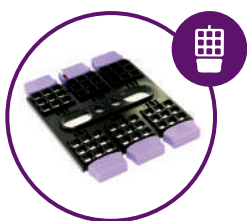


## EVIDENCE INVESTIGATOR PACKAGE

---



The Evidence Investigator comes supplied as part of a package, with all essential components provided. These components are approved for use with the Evidence Investigator and make it easier for the user to conduct testing.



Biochip carrier handling tray



Thermoshaker



PCR (Molecular Only)



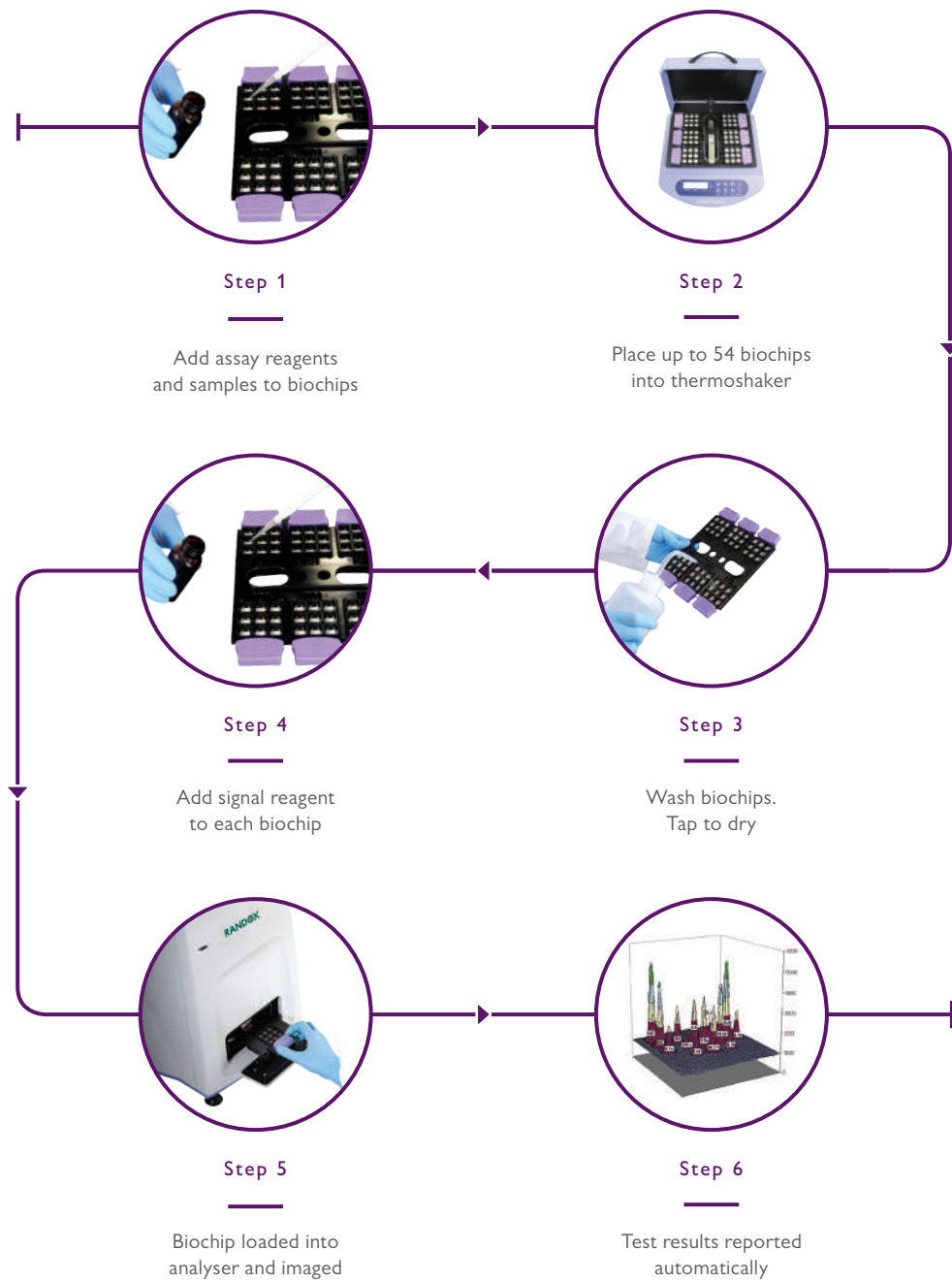
PC & imaging software



Barcode scanner

## IMMUNOASSAY TESTING PROCESS

---





# SOFTWARE



### On-board data analysis

---

- No manipulation of results required
- Reduces the risk of operator error
- Rapid results improves workflow

### Simplicity

---

- Minimal training required
- Highly intuitive operating system
- Colour-coded sample addition

### Flexibility

---

- Multi-format option for results review  
e.g. by array, by users, by date or sample code
- Fully printable reports

### Retrospective testing

---

- Retrieve previously unreported tests
- Reduces reagent wastage
- Saves time and labour costs

### Storage facilities

---

- Store up to 20,000 sample results
- Store up to 500,000 sample test results

### Highly secure

---

- Password protected for various user levels
- Full traceability of data

### Extensive QC capabilities

---

- Internal QC software included with Levey-Jennings charts multi-point QC rules and auto flagging of outliers

### Connectivity

---

- LIMS integrated for convenient reporting

### Service

---

- Easy troubleshooting process
- Regular system checks to continually assure the operator of optimum system performance

## SPECIFICATIONS

---

Accreditation	Internally accredited to full CE and UL certification
Analyser description	Semi-automated Biochip Array Analyser
Biochip capacity	9 biochips on Evidence Investigator, 54 biochips on Thermoshaker
Calibration method	9 point calibration
Connectivity	LIMS integration
<hr/>	
Data back-up methods	Via writable DVD, CD, USB Mass-storage or Network folder
Environment	Operating temperature 16 to 25°C Relative Humidity < 80% Altitude < 2000m Pollution degree 2 (IEC 664)
Fuses	Mains Inlet Fuse (F1) T 2 A H 250V (20mm x 5mm) Motor Control Board (F1) T I A L 250V (20mm x 5mm)
Incubation time	Array-specific, 30–90 minutes
Installation requirements	Evidence Investigator must be connected to a single-phase power supply
Measurement principal	Chemiluminescent
Network services	Highly Secure Remote Diagnostics, automated software and array updates
Peripherals	Printer, barcode scanner, carrier handling tray, thermoshaker and thermocycler (molecular only)
Quality control	Levey-Jennings, user definable multipoint rules
Reagent volume	Array specific, details supplied in kits

“ EQUIPPED TO PROVIDE RELIABLE RESULTS AND ROBUST ENOUGH TO WITHSTAND FREQUENT, HEAVY USE ”

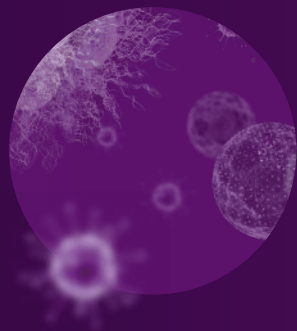
---

Sample loading	Single carrier loading bay
Sample throughput	Array specific
Sample type	Array specific including serum, plasma, whole blood, urine, tissue, feed, honey, milk, egg, cell culture supernatant, cerebrospinal fluid, oral fluid, bronchoalveolar lavage fluid, forensic matrices
Sample volume	Array specific; 25–150µl
Start up / shut down time	On command
Time to first result	Array specific
Input voltage	Supply Voltage 100–120Vac, 60Hz, 22VA 200–240Vac, 50Hz, 30VA Installation category II Camera Power Supply 100–240Vac, 47–63Hz, 1.35A
UPS	Recommended
Water quality	CLSI Type II or better

## MOLECULAR TESTING

---

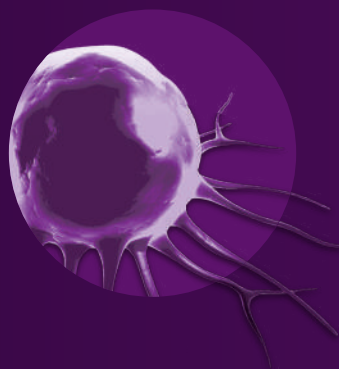
Our molecular product range offers diagnostic, prognostic and predictive solutions across a variety of disease areas including sexually transmitted infection (STI), respiratory tract infection, colorectal cancer, familial hypercholesterolemia (FH) and cardiovascular disease (CVD). Additionally, we can provide a wide range of assay formats including single nucleotide polymorphisms (SNP) genotyping, pathogen detection and mutation detection.



### Pathogen Detection

#### STI and Respiratory Multiplex Arrays

Both arrays detect the most common and frequently requested infections in sexual and respiratory health. These comprehensive, highly sensitive and specific tests enable identification of co-infections simultaneously, often in asymptomatic patients and enable antibiotic stewardship.



### Mutation Detection

#### KRAS, BRAF, PIK3CA Array and Familial Hypercholesterolemia Arrays I & II

These unique biochip assays permit high discrimination between multiple targets in a number of genes with a rapid turnaround time (3 hours). The arrays enable detection of the most frequently occurring mutations known to cause disease (FH) and adversely affect patient treatment (KRAS, BRAF, PIK3CA). A unique primer set is designed for each target which will hybridise to a complementary oligo-nucleotide probe spotted on a biochip discrete test region (DTR).



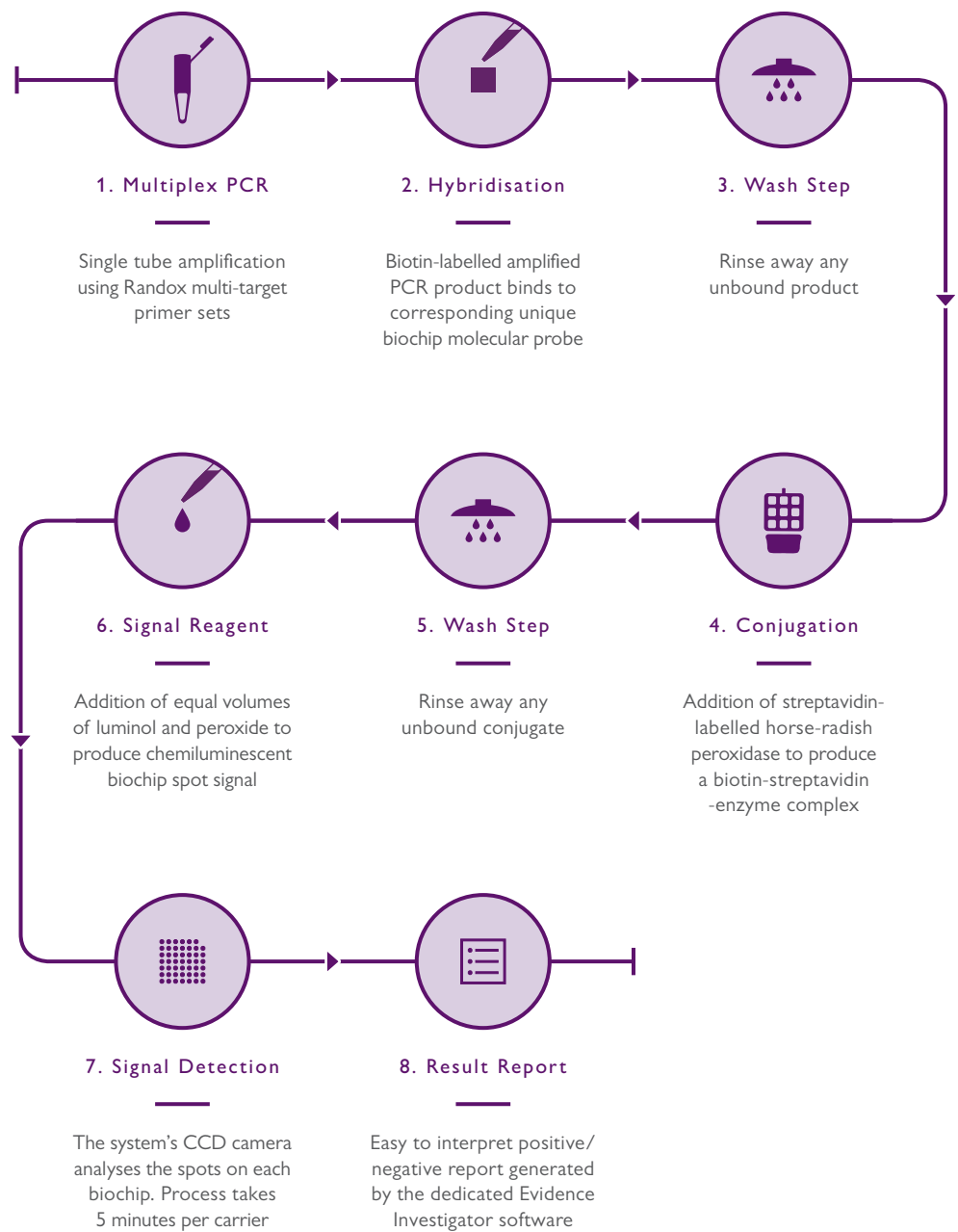
### SNP Genotyping

#### Cardiovascular Risk Prediction Array

This array identifies individuals with a genetic predisposition to coronary heart disease (CHD). The innovative multiplex primers are designed to discriminate DNA sequences which differ only at one base.

# MOLECULAR TESTING PROCESS

---



## IMMUNOASSAY TEST MENU

---

### Adhesion Molecules

---

E-Selectin  
Intercellular Adhesion Molecule-I – ICAM-I  
L-Selectin  
P-Selectin  
Vascular Cell Adhesion Molecule-I – VCAM-I

### Alzheimer's

---

Apolipoprotein E4 – ApoE4  
Pan Apolipoprotein E – Apo E

### Anaemia

---

Ferritin  
Folate  
Vitamin B12

### Bone Disease

---

Vitamin D

### Cancer

---

Carcinoembryonic Antigen – CEA  
Free Prostate Specific Antigen – FPSA  
Total Prostate Specific Antigen – TPSA

### Cardiac

---

Cardiac Troponin I – cTnI  
Creatine Kinase MB – CKMB  
Heart-Type Fatty Acid-Binding Protein – FABP3  
Myoglobin

### Cytokines

---

Epidermal Growth Factor – EGF  
Granulocyte Macrophage Colony Stimulating Factor – GM-CSF  
Interferon- $\gamma$  – IFN- $\gamma$   
Interleukin-1 alpha – IL-1 $\alpha$   
Interleukin-1 beta – IL-1 $\beta$   
Interleukin-2 – IL-2  
Interleukin-3 – IL-3

### Cytokines Continued

---

Interleukin-4 – IL-4  
Interleukin-5 – IL 5  
Interleukin-6 – IL-6  
Interleukin-7 – IL-7  
Interleukin-8 – IL-8  
Interleukin-10 – IL-10  
Interleukin-12p70 – IL-12p70  
Interleukin-13 – IL-13  
Interleukin-15 – IL 15  
Interleukin-23 – IL-23  
Macrophage Inflammatory Protein-1 $\alpha$  – MIP-1 $\alpha$   
Matrix Metalloproteinase 9 – MMP 9  
Monocyte Chemotactic Protein-1 – MCP-1  
Soluble IL-2 Receptor Alpha – sIL-2R $\alpha$   
Soluble IL-6 Receptor – sIL-6R  
Soluble Tumour Necrosis Factor Receptor 1 – sTNFR1  
Soluble Tumour Necrosis Factor Receptor 2 – sTNFR2  
Tumour Necrosis Factor- $\alpha$  – TNF- $\alpha$   
Vascular Endothelial Growth Factor – VEGF

### Diabetes

---

Insulin

### Endocrine

---

Cortisol  
Dehydroepiandrosterone-Sulphate – DHEAS

### Fibrinolysis

---

D-Dimer

### Fertility

---

Estradiol  
Follicle Stimulating Hormone – FSH  
Luteinizing Hormone – LH  
Progesterone  
Prolactin  
Sex Hormone Binding Globulin – SHBG  
Testosterone

## Gastrointestinal

---

Gastrin 17 – GI7  
Helicobacter pylori – H. pylori  
Pepsinogen I – PGI  
Pepsinogen II – PGII

## Metabolic

---

Adiponectin  
Ferritin  
Insulin  
Leptin  
Plasminogen Activator Inhibitor – PAI-I  
Resistin

## Renal

---

Adiponectin  
Complement C3a des Arginine – C3a des Arg  
C-Reactive Protein – CRP  
Cystatin C  
D-Dimer  
Epidermal Growth Factor – EGF  
Liver Fatty Acid Binding Protein-I – FABP1  
Interleukin-8 – IL-8  
Macrophage Inflammatory Protein-1 $\alpha$  – MIP-1 $\alpha$   
Neutrophil Gelatinase – Associated Lipocalin – NGAL  
Soluble Tumour Necrosis Factor Receptor 1 – sTNFR1  
Soluble Tumour Necrosis Factor Receptor 2 – sTNFR2

## Stroke

---

Brain-Derived Neurotrophic Factor – BDNF  
D-Dimer  
Glial Fibrillary Acidic Protein – GFAP  
Glutathione S – Transferase Pi – GSTPi  
Heart-Type Fatty Acid-Binding Protein – FABP3  
Interleukin-6 – IL-6  
Nucleoside Diphosphate Kinase – NDKA  
Neuron Specific Enolase – NSE  
Parkinson Protein 7 – PARK-7  
Soluble Tumour Necrosis Factor Receptor 1 – sTNFR1

## Thyroid

---

Anti-Thyroglobulin – Anti-Tg  
Anti-Thyroid Peroxidase – Anti-TPO  
Free Tri-iodothyronine – FT3  
Free Thyroxine – FT4  
Thyroid Stimulating Hormone – TSH  
Thyroxine Binding Globulin – TBG  
Total Tri-iodothyronine – TT3  
Total Thyroxine – TT4

## Tissue Damage

---

Liver Fatty Acid Binding Protein-I – FABP1  
Heart-Type Fatty Acid-Binding Protein – FABP3  
Adipose Fatty Acid Binding Protein – FABP4  
Epidermal Fatty Acid Binding Protein – FABP5  
Ileal Fatty Acid Binding Protein – FABP6  
Brain Fatty Acid Binding Protein – FABP7  
Testis Fatty Acid Binding Protein – FABP9

## TOXICOLOGY TEST MENU

---

### Analgesics

---

Acetaminophen  
Buprenorphine  
Dextromethorphan  
Fentanyl  
Generic opioids  
Ibuprofen  
Meperidine  
Methadone  
Opiates  
Oxycodone  
Oxycodone I  
Oxycodone II  
Phencyclidine (PCP)  
Pregabalin  
Propoxyphene  
Salicylate  
Tramadol

### Antidepressants

---

Escitalopram  
Fluoxetine  
Haloperidol  
Methylphenidate / Ritalinic acid  
Sertraline  
Trazodone  
Tricyclic Antidepressant

### New Psychoactive Substances

---

AB-PINACA  
AB-CHMINACA  
Acetyl Fentanyl  
AH-7921  
Alpha-PVP  
Carfentanyl  
Furanyl Fentanyl  
JWH-018  
Mephedrone  
Mescaline  
Mitragynine  
MT-45

### New Psychoactive Substances Continued

---

Naloxone  
Ocfentanyl  
Phenylpiperazine I  
Phenylpiperazine II  
Salvinorin  
Sufentanil  
U-47700  
UR-144  
W-19

### Stimulants

---

6-MAM  
Amphetamine  
Benzoylecgonine (Cocaine Metabolite)  
Benzylpiperazine  
Cannabinoids (THC)  
LSD  
MDMA  
Methamphetamine

### Sedative Hypnotics

---

Barbiturates  
Benzodiazepines I  
Benzodiazepines II  
Chloral Hydrate Metabolite  
Clonazepam  
Etizolam  
Flunitrazepam  
Ketamine  
Meprobamate  
Methaqualone  
Zaleplon  
Zolpidem  
Zopiclone

### Other

---

Creatinine  
EtG  
Gabapentin  
Methotrexate



## MOLECULAR TEST MENU

---

### Cardiac Risk Prediction Array

---

20 SNPs

### Familial Hypercholesterolemia (FH) Arrays

---

LDLR – 38 mutations

APOB – 1 mutation

PCSK9 – 1 mutation

### KRAS, BRAF, PIK3CA Array

---

KRAS – 16 mutations

BRAF – 1 mutation

PIK3CA – 3 mutations

### Respiratory Pathogens Array

---

Adenovirus A

Adenovirus B

Adenovirus C

Adenovirus D

Adenovirus E

Coronavirus 229E/NL63

Coronavirus OC43/HKU1

Enterovirus A

Enterovirus B

Enterovirus C

Human Bocavirus 1

Human Bocavirus 2

Human Bocavirus 3

Human Metapneumovirus – hMPV

Influenza A

Influenza B

Parainfluenza Virus 1

Parainfluenza Virus 2

Parainfluenza Virus 3

Parainfluenza Virus 4

Respiratory Syncytial Virus a – RSVa

Respiratory Syncytial Virus b – RSVb

### Respiratory Pathogens Array Continued

---

Rhinovirus A

Rhinovirus B

Bordetella pertussis

Chlamydomphila pneumoniae

Mycoplasma pneumoniae

Legionella pneumophila

Moraxella catarrhalis

Streptococcus pneumoniae

Haemophilus influenzae

### Sexually Transmitted Infection (STI) Array

---

Chlamydia trachomatis – (CT)

Haemophilus ducreyi – (HD)

Mycoplasma genitalium – (MG)

Mycoplasma hominis – (MH)

Neisseria gonorrhoea – (NG)

Treponema pallidum – (TP)

Trichomonas vaginalis – (TV)

Ureaplasma urealyticum – (UU)

Herpes simplex Virus 1 – (HSV-1)

Herpes simplex Virus 2 – (HSV-2)

## FOOD DIAGNOSTICS TEST MENU

---

### Antimicrobial Array I Ultra

---

Sulphadimethoxine  
Sulphadiazine  
Sulphadoxine  
Sulphachlorpyridazine  
Sulphamethoxyipyridazine  
Sulphamerazine  
Sulphisoxazole  
Sulphathiazole  
Sulphamethazine  
Sulphaquinoxaline  
Sulphapyridine  
Sulphamethoxazole  
Sulphamonomethoxine  
Trimethoprim  
Dapsone

### Antimicrobial Array II Plus

---

Quinolones  
Ceftiofur  
Thiamphenicol  
Streptomycin  
Tylosin  
Tetracyclines

### Antimicrobial Array III

---

AOZ  
AMAZ  
AHD  
SEM

### Antimicrobial Array III (CAP Only)

---

Chloramphenicol

### Antimicrobial Array IV

---

Spiramycin/Josamycin  
Apramycin  
Bacitracin  
Neomycin/Paramomycin

### Antimicrobial Array IV (Continued)

---

Tobramycin  
Tylosin B/Tilmicosin  
Spectinomycin  
Amikacin/Kanamycin  
Lincosamides  
Erythromycin  
Streptomycin/Dihydrostreptomycin  
Virginiamycin

### Antimicrobial Array V

---

Nitroimidazoles  
Chloramphenicol

### Anthelmintics Array

---

Benzimidazoles  
Amino Benzimidazoles  
Thiabendazole  
Triclabendazole  
Levamisole  
Moxidectin  
Avermectins

### Avermectins Only Array

---

Avermectins

### Beta Lactams Array Plus

---

Beta Lactam  
Cephalexin  
Cefuroxime

### Coccidiostats Array

---

Clopidol  
Decoquate  
Diclazuril  
Halofuginone  
Imidocarb  
Lasalocid  
Maduramicin

### Coccidiostats Array (Continued)

---

Monensin  
Nicarbazin  
Robenidine  
Salinomycin  
Toltrazuril

### Growth Promoter

---

Beta-Agonists  
Boldenone  
Corticosteroids  
Nandrolone  
Ractopamine  
Stanozolol  
Stilbenes  
Trenbolone  
Zeranol

### InfiniPlex for Milk

---

Quinolones  
Beta-Lactams  
Cephalexin  
Erythromycin  
Spiramycin  
Tylosin  
Lincomycin  
Pirlimycin  
Neomycin  
Streptomycin  
Gentamicin  
Kanamycin  
Spectinomycin  
Amphenicols  
Trimethoprim  
Baquiloprim  
Rifaximin  
Apramycin  
Virginiamycin  
Tobramycin  
Tetracyclines  
Polymixins

### InfiniPlex for Milk (Continued)

---

Bacitracin  
Cefuroxime  
5-hydroxy Flunixin  
Meloxicam  
Metamizole  
Tolfenamic Acid  
Phenylbutazone  
Chlormadinone  
Methylprednisolone  
Sulphapyridine  
Dapsone  
Melamine  
Nitroxynil  
Aflatoxin M1  
Sulphonamides  
Novobiocin  
Ractopamine  
Dexamethasone  
Hygromycin B  
Sulfaguanidine  
Sulphamethazine

### Myco 10 Array

---

Aflatoxin B1  
Aflatoxin G1  
Deoxynivalenol  
Diacetoxyscirpenol  
Ergot Alkaloids  
Fumonisin  
Ochratoxin A  
Paxilline  
T2 Toxin  
Zearalenone

### Synthetic Steroids Array

---

Methyltestosterone  
17 $\beta$ -Clostebol  
Gestagens  
Ethinylestradiol

## LOCAL ENGINEERS. GLOBAL COVERAGE.

---

Randox Laboratories provide customers with an unrivalled support service. Our international team of fully qualified engineering and technical support specialists deliver on-site Evidence Series immunoanalyser installation, training and validation. We also offer a range of bespoke service and extended warranty packages that can be tailored to your budget.

We place extreme importance on customer service and so it is our top priority to provide the best quality support. Our global network of local specialists are here to help you and respond rapidly to any query.



21

Randox offices  
distributed across the globe

At Randox we are always ready to provide the support needed to ensure you fully enjoy all the advantages of our unique Biochip Array Technology. We understand the importance of efficient analyser operation time and how that affects outcomes for the laboratory.

Working alongside you, we can ensure your laboratory is working to an optimal level - helping achieve our mission of improving health worldwide.



145

countries covered  
by our distributor network

---

50

technical support specialists

---

45

trained service engineers

---

350

scientists placed  
around the world

---

## WHY BUY EVIDENCE INVESTIGATOR?

---



### Test Menu

---

Most unique test menu with all routine immunoassays and new tests under development



### Matrices

---

Serum, plasma, whole blood, urine, tissue, egg, feed, honey, milk, cerebrospinal fluid, saliva and forensic matrices



### Consolidation

---

Multiplex testing allows multiple tests to be carried out from a single undivided sample



### Adaptability

---

Suitable for clinical, molecular, food and toxicology testing



### Speed

---

Faster sample processing time than leading competitors



### Throughput

---

Throughput of up to 2376 tests per hour



ADAPTABLE, EFFICIENT & COMPREHENSIVE



Radox Investigator

Information correct at time of print. Radox Laboratories Ltd is a subsidiary of Radox Holdings Limited a company registered within Northern Ireland with company number NI. 614690. VAT Registered Number: GB 151 6827 08. Product availability may vary from country to country. Please contact your local Radox representative for information. Products may be for Research Use Only and not for use in diagnostic procedures in the USA.